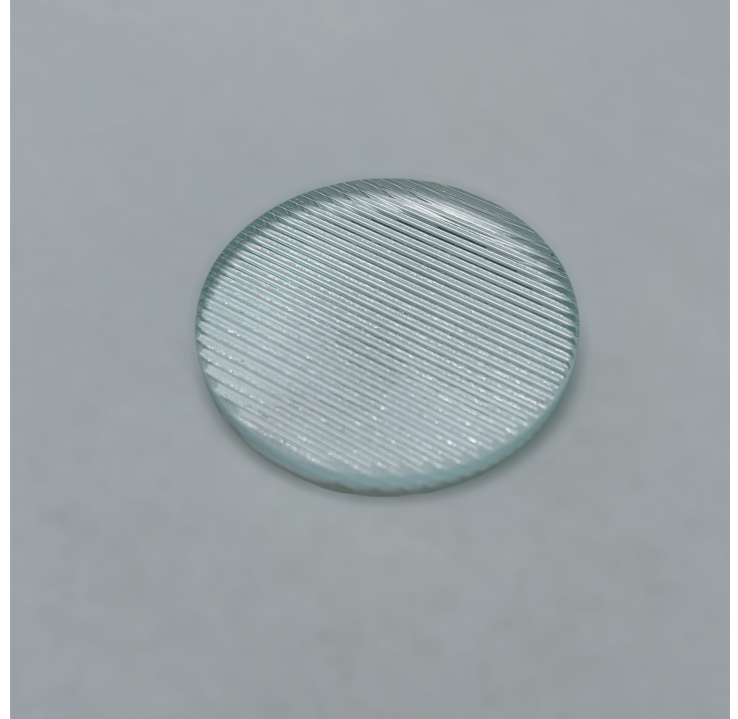


Project _____ Type _____ Quantity _____

The LS-50 is a 50mm [1.98in] x 3mm [.13in] linear spread lens. Use the LS-50 to change a round beam to oval. The narrower the starting beam the narrower and longer the resulting beam.

Construction: Soda lime glass.

Note: A holder may be required depending on light fixture.



Ordering Guide

LS50 _____

Prefix