


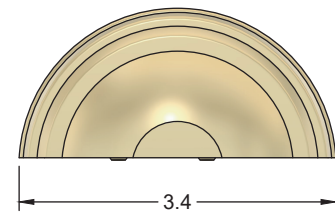
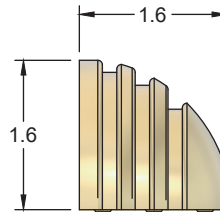
Project _____

Type _____ Quantity _____

The PASO-KEY is a wall mount fixture suited for step and walkway illumination. A stainless steel cleat is surface mounted and leveled to provide attachment point for fixture body. Fixture locks to cleat via hidden hardware. This design is easy to install and removes and hardware from sight. Uni-body housing is CNC machined with or without grooves.

Specification

Light Source	LED Module
LED Rated Life	50,000 hours average **
Power Consumption	1W, 2W, 3W Options
CCT	2700K, 3000K, 4000K, 5000K
CRI	90+
Light Output	80, 160, 240 Lumens (3000K)
Input	DC, Constant Current, 700ma Max.
Lens	CNC Machined Acrylic
Operating Temperature	-31F to 130F (-35C to 54C)
Thermal Management	Fixture is utilized as heat sink
Fixture Construction	CNC Machined from Solid Billet
Ingress Protection	IP67
Certification	



* IES LM-80 Standard ensures led light source will provide lumen maintenance and color performance.

** LED life is defined as the time to 70% lumen maintenance (L70)

LED Driver Required - Consult Factory For Assistance

Ordering Guide

PAKEY					
Prefix	Material	CCT	Watt	FACE	Finish
AL - Aluminum	27 - 2700K	1 - 80 lm	GV - Grooved	N - Natural (Brass/Copper/Stainless)	
BR - Brass	30 - 3000K	2 - 160 lm	NG - No Grooves	BK - Black Powder Coat	
CU - Copper	40 - 4000K	3 - 240 lm		BN - Brown Powder Coat	
SS - Stainless	50 - 5000K			PTB - Patina Brown (Brass/Copper Only)	
	AM - Amber			PTK - Patina Black (Brass/Copper Only)	
				C - Custom	

