
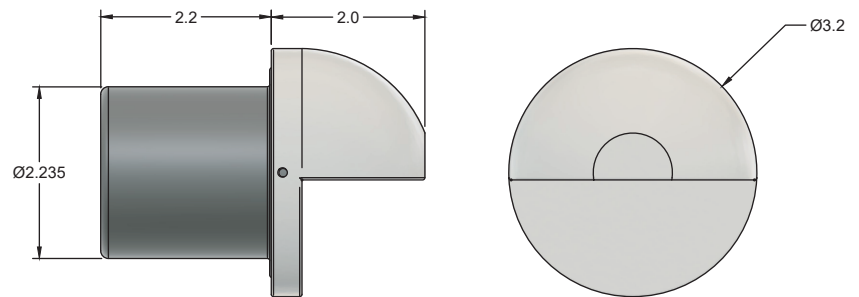


Project _____ Type _____ Quantity _____

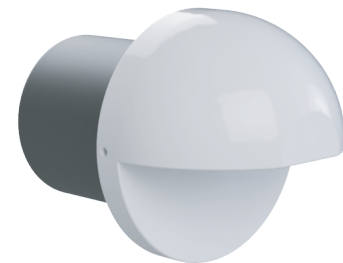
The PA325 is a compact fixture suited for step and walkway illumination. J-Box is CNC machined aluminum with a corrosion protective hardcoat. Light output is directed down providing glare free illumination. Fixture housing can be leveled after securing to J-box. J-Box can be specified with 1/2 or 3/4 NPT rear conduit entry.

Specification

Light Source	CR8 Led Lamp * Quick Change
LED Rated Life	50,000 hours average **
Power Consumption	1W, 2W, 3W, 5W Options
CCT	2700K, 3000K, 4000K, 5000K
CRI	93
Light Output	80, 160, 240, 400 Lumens (3000K)
Input	10-15 Vac
Lens	Borosilicate Glass
Lamp holder	GU5.3
Conduit Entry	1/2 or 3/4 NPT
Operating Temperature	-31F to 130F (-35C to 54C)
Thermal Management	Fixture is utilized as heat sink
Fixture Construction	CNC Machined from Solid Billet
Ingress Protection	IP67
Certification	



Dimensions inches [mm]



* IES LM-80 Standard ensures led light source will provide lumen maintenance and color performance.

** LED life is defined as the time to 70% lumen maintenance (L70)

Low Voltage Transformer Required

Ordering Guide

PA325					
Prefix	Material	CCT	Watt	Conduit Entry	Finish
AL - Aluminum	27 - 2700K	1 - 70 lm	12 - 1/2 npt	N - Natural (Brass/Copper/Stainless)	
BR - Brass	30 - 3000K	2 - 140 lm	34 - 3/4 npt	BK - Black Powder Coat	
CU - Copper	40 - 4000K	3 - 210 lm		BN - Brown Powder Coat	
SS - Stainless	50 - 5000K			PTB - Patina Brown (Brass/Copper Only)	
				PTK - Patina Black (Brass/Copper Only)	
				C - Custom	